



**Dr. Hanna's Discovery Of Cellular Nutrition is based on her Scientific Medical Studies and her independent study of the effects of foods and herbs on the cells that make up our organs.**

**In addition to her laboratory experience, Dr. Hanna provided nutritional counseling to individuals dealing with Alzheimer's disease, senility, cancer, asthma, osteoporosis, heart and brain disorders.**

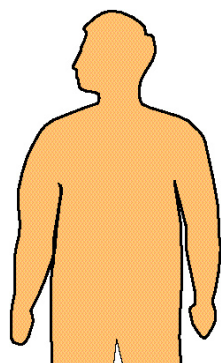
# AVOID THE UNAVOIDABLE!

## The Extensive Program

*Dr. Hanna's step-by-step program provides a quick and easy way to dramatically improve the quality of nutrition. This not only helps with weight control and anti-aging, it helps improve all kinds of health conditions. Why? Because it works on the whole body!*

### WEIGHT CONTROL

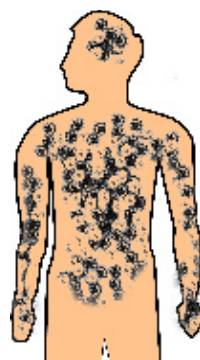
Body Fat • Cellulite



**FACT:**  
Rapid weight gain (or weight loss) are becoming epidemic. These conditions generally result in low self esteem & depression. Prozac is not the answer!

### PREMATURE AGING

Wrinkles • Osteoporosis



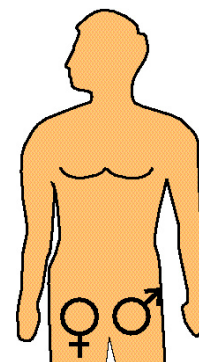
**FACT:**  
As toxicity increases in the body, premature aging sets in. This results in symptoms such as wrinkles, memory loss, osteoporosis, senility, uncontrolled anger & depression (which can sometimes result in suicide).

**STEPS 1-2-3-4 . . . Perfect For Everybody**

*For those dealing with more serious conditions, degenerative diseases, including some forms of cancer, a more focused approach is offered. This approach includes a nutritional analysis, specific adjustments to diet and special formulae to support the recovery process.*

### CANCER

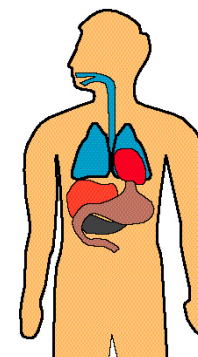
Breast • Ovarian • Prostate



**FACT:**  
By the year 2000, 1 in 2 people are expected to develop cancer! None of our medical treatments can guarantee a cure. If you are not yet affected, you still have time to do something about it!

### DEGENERATIVE DISEASE

Asthma • Diabetes



**FACT:**  
According to reports, many babies are born today with debilitating and degenerative diseases, asthma, diabetes, down syndrome, to name a few. The number of babies affected are on the rise!

**STEPS 5 & 6 . . . For Special Conditions**